

SMA TYPE

– Block Type –



part number structure

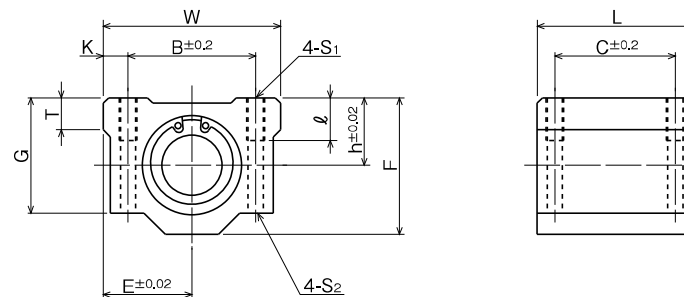
example **SMSA 25 G UU**

specification
SMA: standard
SMSA: anti-corrosion

seal
blank: without seal
UU: seals on both sides

retainer material
blank: standard/steel
 anti-corrosion/stainless steel
G: resin

inner contact diameter



part number	inner contact diameter		major dimensions						
	mm	tolerance	h mm	E mm	W mm	L mm	F mm	G mm	T mm
		μm							
SMA 3GUU	3	0 - 8	5	8	16	13	10	8	—
SMA 4GUU	4		5.5	8.5	17	15	11	9	—
SMA 5GUU	5		7	11	22	18	14	11	—
SMA 6GUU	6	0 - 9	9	15	30	25	18	15	6
SMA 8GUU	8		11	17	34	30	22	18	6
SMA 10GUU	10		13	20	40	35	26	21	8
SMA 12GUU	12		15	21	42	36	28	24	8
SMA 13GUU	13		15	22	44	39	30	24.5	8
SMA 16GUU	16		19	25	50	44	38.5	32.5	9
SMA 20GUU	20	0 -10	21	27	54	50	41	35	11
SMA 25GUU	25		26	38	76	67	51.5	42	12
SMA 30GUU	30		30	39	78	72	59.5	49	15
SMA 35GUU	35	0 -12	34	45	90	80	68	54	18
SMA 40GUU	40		40	51	102	90	78	62	20
SMA 50GUU	50		52	61	122	110	102	80	25
SMA 60GUU	60	0/-15	58	66	132	122	114	94	30

mounting dimensions						basic load rating		* mass	shaft diameter
B mm	C mm	K mm	S ₁	ℓ mm	S ₂ mm	dynamic C N	static Co N		
11	8	2.5	M2	—	—	69	105	5	3
12	10	2.5	M3	—	—	88	127	7	4
16	12	3	M3	—	—	167	206	14	5
20	15	5	M4	8	3.4	206	265	34	6
24	18	5	M4	8	3.4	274	392	52	8
28	21	6	M5	12	4.3	372	549	92	10
30.5	26	5.75	M5	12	4.3	510	784	102	12
33	26	5.5	M5	12	4.3	510	784	120	13
36	34	7	M5	12	4.3	774	1,180	200	16
40	40	7	M6	12	5.2	882	1,370	255	20
54	50	11	M8	18	7	980	1,570	600	25
58	58	10	M8	18	7	1,570	2,740	735	30
70	60	10	M8	18	7	1,670	3,140	1,100	35
80	60	11	M10	25	8.7	2,160	4,020	1,590	40
100	80	11	M10	25	8.7	3,820	7,940	3,340	50
108	90	12	M12	25	10.7	4,700	10,000	4,270	60

* Mass of resin retainer type

1N≒0.102kgf

SMA-W TYPE

– Double-Wide Block Type –



part number structure

example **SMSA 25 G W UU**

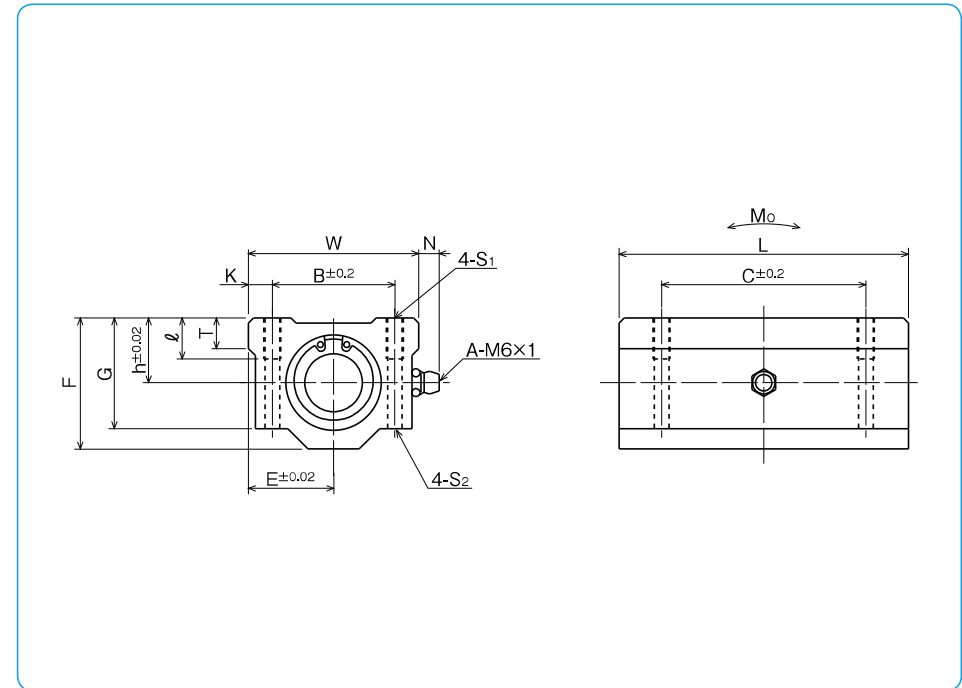
specification
SMA: standard
SMSA: anti-corrosion

inner contact diameter

retainer material
blank: standard/steel
anti-corrosion/stainless steel
G: resin

seal
blank: without seal
UU: seals on both sides

double-wide type



part number	inner contact diameter		major dimensions							
	mm	tolerance μm	h mm	E mm	W mm	L mm	F mm	G mm	T mm	N mm
SMA 3GWUU	3	0 - 8	5	8	16	23	10	8	—	—
SMA 4GWUU	4		5.5	8.5	17	27	11	9	—	—
SMA 5GWUU	5		7	11	22	33	14	11	—	—
SMA 6GWUU	6	0 - 9	9	15	30	48	18	15	6	7
SMA 8GWUU	8		11	17	34	58	22	18	6	7
SMA10GWUU	10		13	20	40	68	26	21	8	7
SMA12GWUU	12		15	21	42	70	28	24	8	6.5
SMA13GWUU	13		15	22	44	75	30	24.5	8	6.5
SMA16GWUU	16		19	25	50	85	38.5	32.5	9	6
SMA20GWUU	20	0 -10	21	27	54	96	41	35	11	7
SMA25GWUU	25		26	38	76	130	51.5	42	12	4
SMA30GWUU	30		30	39	78	140	59.5	49	15	5
SMA35GWUU	35	0 -12	34	45	90	155	68	54	18	5.5
SMA40GWUU	40		40	51	102	175	78	62	20	5
SMA50GWUU	50		52	61	122	215	102	80	25	5
SMA60GWUU	60	0/-15	58	66	132	240	114	94	30	5

mounting dimensions						basic load rating		allowable static moment Mo N · m	* mass g	shaft diameter mm
B mm	C mm	K mm	S1	ℓ mm	S2 mm	dynamic C N	static Co N			
11	16	2.5	M2	—	—	108	206	0.49	10	3
12	20	2.5	M3	—	—	137	255	0.72	13	4
16	25	3	M3	—	—	265	412	1.54	27	5
20	36	5	M4	8	3.4	323	530	2.18	63	6
24	42	5	M4	8	3.4	431	784	4.31	102	8
28	46	6	M5	12	4.3	588	1,100	7.24	180	10
30.5	50	5.75	M5	12	4.3	813	1,570	10.9	205	12
33	50	5.5	M5	12	4.3	813	1,570	11.6	240	13
36	60	7	M5	12	4.3	1,230	2,350	19.7	400	16
40	70	7	M6	12	5.2	1,400	2,740	26.8	570	20
54	100	11	M8	18	7	1,560	3,140	43.4	1,200	25
58	110	10	M8	18	7	2,490	5,490	82.8	1,480	30
70	120	10	M8	18	7	2,650	6,270	110	2,200	35
80	140	11	M10	25	8.7	3,430	8,040	147	3,200	40
100	160	11	M10	25	8.7	6,080	15,900	397	6,700	50
108	180	12	M12	25	10.7	7,550	20,000	530	8,560	60

* Mass of resin retainer type

1N ≃ 0.102kgf 1N · m ≃ 0.102kgf · m

AK TYPE

– Compact Block Type –



part number structure

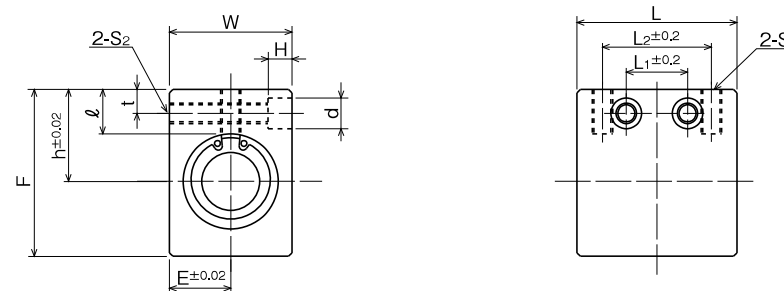
example **AKS 25 G UU**

specification
AK: standard
AKS: anti-corrosion

seal
blank: without seal
UU: seals on both sides

retainer material
blank: standard/steel
 anti-corrosion/stainless steel
G: resin

inner contact diameter



part number	inner contact diameter		outer dimensions							major dimensions	
	mm	tolerance μm	h mm	E mm	W mm	L mm	F mm	L ₂ mm	S ₁		
AK 6GUU	6	0 - 9	14	8	16	27	22	18	M4		
AK 8GUU	8		16	10	20	32	26	20	M5		
AK10GUU	10		19	13	26	39	32	27	M6		
AK12GUU	12		20	14	28	40	34	27	M6		
AK13GUU	13		25	15	30	42	43	28	M6		
AK16GUU	16		27	18	36	47	49	32	M6		
AK20GUU	20	0 -10	31	21	42	52	54	36	M8		
AK25GUU	25		37	26	52	69	65	42	M10		
AK30GUU	30		40	29	58	74	71	44	M10		

mounting dimensions						basic load rating		* mass g	shaft diameter mm
l mm	L ₁ mm	t mm	S ₂	d mm	H mm	dynamic C N	static Co N		
8	9	5	M4	6	5	206	265	21.5	6
8.5	10	5	M4	6	5	274	392	40	8
9.5	15	6	M5	8	6	372	549	80	10
9.5	15	6	M5	8	6	510	784	90	12
13.5	16	7	M6	9	7	510	784	132	13
13	18	7	M6	9	7	774	1,180	204	16
15	18	8	M8	11	8	882	1,370	272	20
17	22	9	M10	14	10	980	1,570	574	25
17.5	22	9	M10	14	10	1,570	2,740	710	30

* Mass of resin retainer type

1N=0.102kgf

AK-W TYPE

– Double-Wide Compact Block Type –



part number structure

example **AKS 25 G W UU**

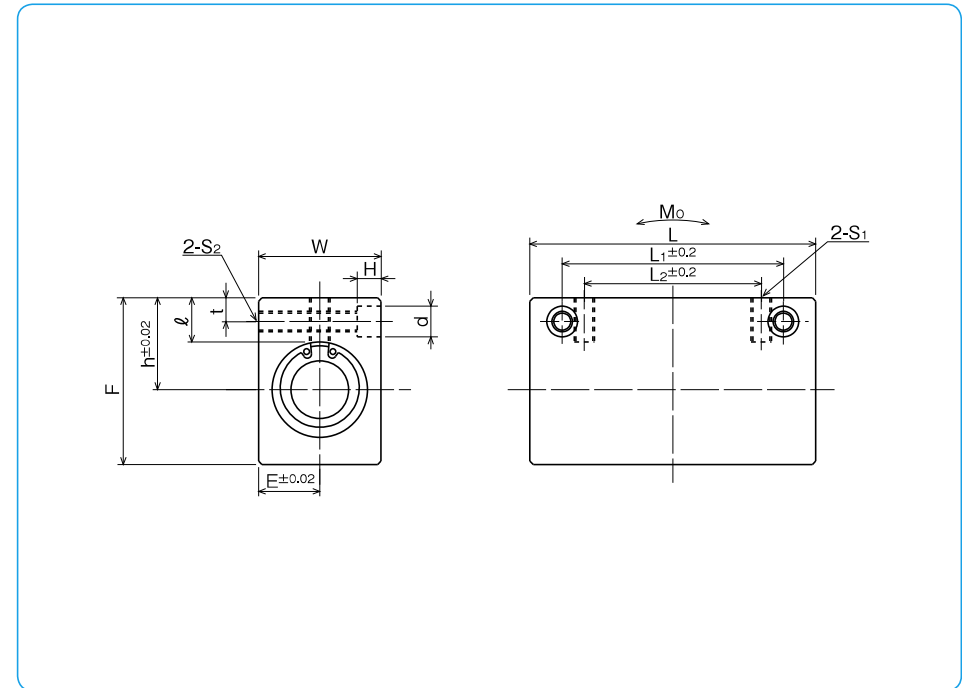
specification
 AK: standard
 AKS: anti-corrosion

inner contact diameter

retainer material
 blank: standard/steel
 anti-corrosion/stainless steel
 G: resin

seal
 blank: without seal
 UU: seals on both sides

double-wide type



part number	inner contact diameter		outer dimensions							major dimensions	
	mm	tolerance μm	h mm	E mm	W mm	L mm	F mm	L ₂ mm	S ₁		
AK 6GWUU	6	0 - 9	14	8	16	46	22	20	M4		
AK 8GWUU	8		16	10	20	56	26	30	M5		
AK10GWUU	10		19	13	26	68	32	36	M6		
AK12GWUU	12		20	14	28	70	34	36	M6		
AK13GWUU	13		25	15	30	74	43	42	M6		
AK16GWUU	16		27	18	36	84	49	52	M6		
AK20GWUU	20	0 -10	31	21	42	94	54	58	M8		
AK25GWUU	25		37	26	52	128	65	80	M10		
AK30GWUU	30		40	29	58	138	71	90	M10		

mounting dimensions						basic load rating		allowable static moment Mo N · m	* mass g	shaft diameter mm
ℓ mm	L ₁ mm	t mm	S ₂	d mm	H mm	dynamic C N	static Co N			
8	30	5	M4	6	5	323	530	2.18	40	6
8.5	42	5	M4	6	5	431	784	4.31	75	8
9.5	50	6	M5	8	6	588	1,100	7.24	150	10
9.5	50	6	M5	8	6	813	1,570	10.9	168	12
13.5	55	7	M6	9	7	813	1,570	11.6	248	13
13	65	7	M6	9	7	1,230	2,350	19.7	383	16
15	70	8	M8	11	8	1,400	2,740	26.8	520	20
17	100	9	M10	14	10	1,560	3,140	43.4	1,120	25
17.5	110	9	M10	14	10	2,490	5,490	82.8	1,384	30

* Mass of resin retainer type

1N ≅ 0.102kgf 1N · m ≅ 0.102kgf · m

SMB TYPE

– Block Type –



part number structure

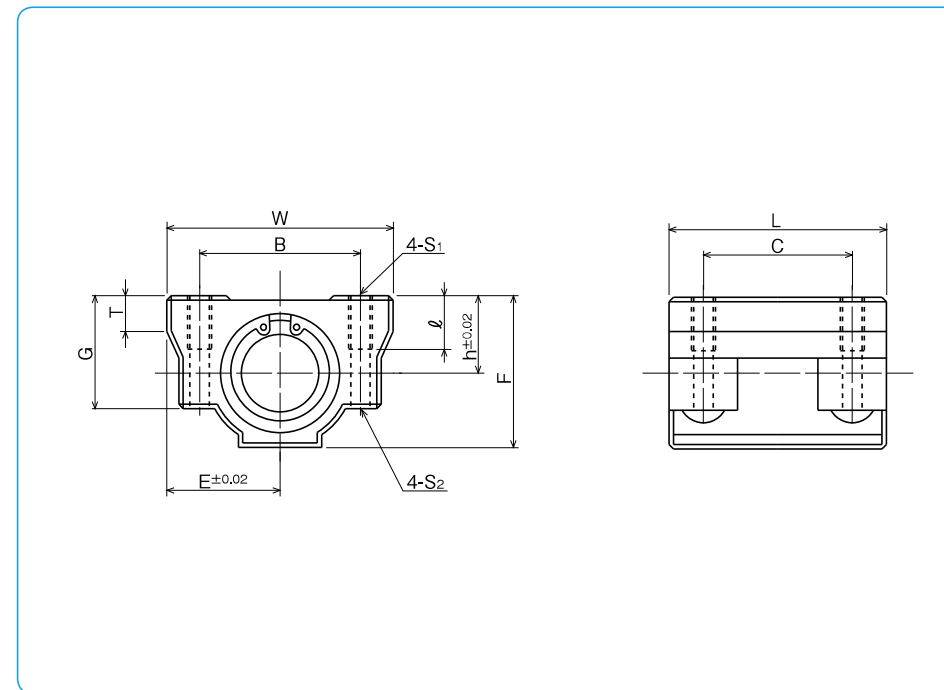
example **SMSB 25 G UU**

specification
SMB: standard
SMSB: anti-corrosion

inner contact diameter

seal
blank: without seal
UU: seals on both sides

retainer material
blank: standard/steel
 anti-corrosion/stainless steel
G: resin



part number	inner contact diameter		outer dimensions							major dimensions	
	mm	tolerance μm	h mm	E mm	W mm	L mm	F mm	G mm	T mm		
SMB13GUU	13	0	16	22	44	39	31	22	8		
SMB16GUU	16	- 9	19	25	50	49	37	28	9		
SMB20GUU	20	0	21	27	54	55	41	31	11		
SMB25GUU	25	-10	26	38	76	73	51	38	12		
SMB30GUU	30	0	30	39	78	80	57	45	15		
SMB40GUU	40	0/-12	40	51	102	96	75	59	22		

mounting dimensions					basic load rating		* mass g	shaft diameter mm
B mm	C mm	S ₁	ℓ mm	S ₂ mm	dynamic C N	static Co N		
33	26	M5	10	4.3	510	784	120	13
36	34	M5	12	4.3	774	1,180	170	16
40	40	M6	12	5.1	882	1,370	210	20
54	50	M8	18	6.8	980	1,570	500	25
58	58	M8	18	6.8	1,570	2,740	600	30
80	60	M10	25	8.6	2,160	4,020	1,200	40

* Mass of resin retainer type

1N=0.102kgf

SMP TYPE

— Pillow Block Type —



part number structure

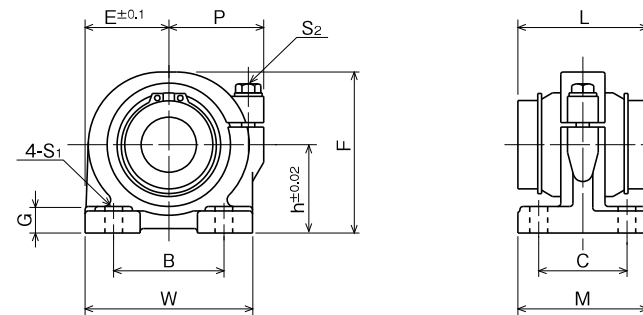
example **SMP 25 G UU**

SMP type

inner contact diameter

seal
blank: without seal
UU: seals on both sides

retainer material
blank: steel
G: resin



part number	inner contact diameter		outer dimensions							major dimensions	
	mm	tolerance	h mm	E mm	W mm	L mm	F mm	G mm	M mm		
		μm									
SMP13GUU	13	0	25	25	50	32	46	8	36		
SMP16GUU	16	- 9	29	27.5	55	37	53	10	40		
SMP20GUU	20	0	34	32.5	65	42	62	12	48		
SMP25GUU	25	-10	40	38	76	59	73	12	59		
SMP30GUU	30	0	45	42.5	85	64	84	15	69		
SMP35GUU	35	-10	50	49	98	70	94	15	76		
SMP40GUU	40	0	60	62	124	80	112	18	86		
SMP50GUU	50	-12	70	72	144	100	134	20	105		
SMP60GUU	60	0/-15	82	84.5	169	110	154	23	115		

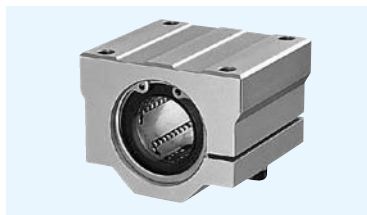
P mm	mounting dimensions			adjustment screw size S ₂	basic load rating		* mass g	shaft diameter mm
	B mm	C mm	S ₁ mm		dynamic C N	static C ₀ N		
30	30	26	7 (M5用)	M5	510	784	270	13
32	35	29	7 (M5用)	M5	774	1,180	380	16
37	40	35	8 (M6用)	M6	882	1,370	680	20
43	50	40	8 (M6用)	M6	980	1,570	1,000	25
49	58	46	10 (M8用)	M8	1,570	2,740	1,400	30
58	62	53	12 (M10用)	M10	1,670	3,140	2,100	35
68	76	64	12 (M10用)	M10	2,160	4,020	3,700	40
80	100	70	14 (M12用)	M12	3,820	7,940	6,100	50
88	115	80	14 (M12用)	M12	4,700	10,000	8,700	60

* Mass of resin retainer type

1N≒0.102kgf

SMJ TYPE

– Clearance Adjustable Type –



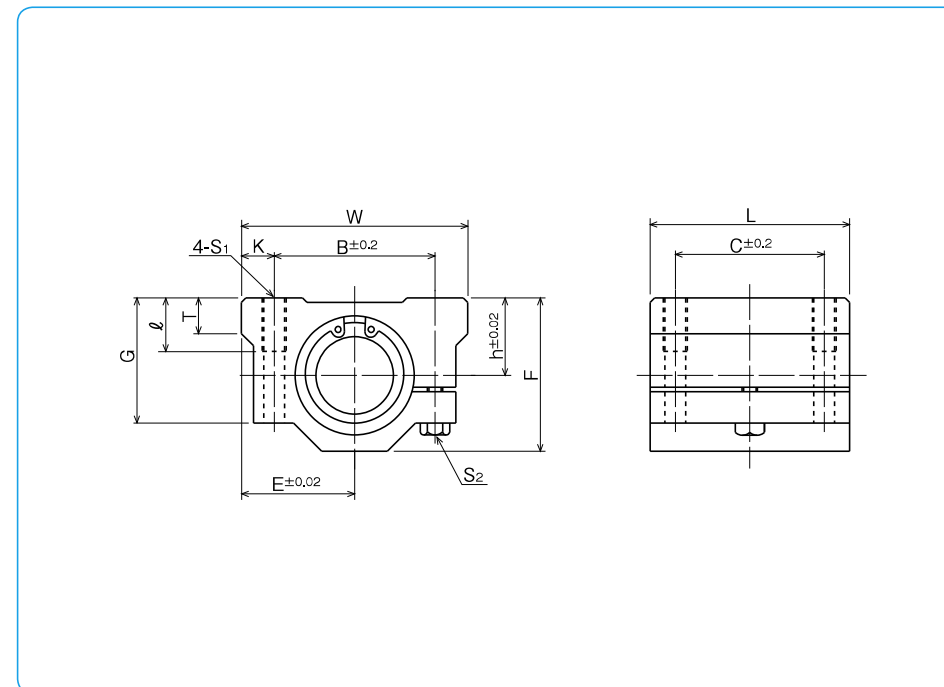
part number structure

example **SMSJ 25 G UU**

specification SMJ: standard SMSJ: anti-corrosion	inner contact diameter	retainer material blank: standard/steel* anti-corrosion/stainless steel* G: resin	seal blank: without seal UU: seals on both sides
--	------------------------	--	--

*Size 10 is provided with resin retainer type only.

part number	inner contact diameter mm	h mm	E mm	outer dimensions			major dimensions			
				W mm	L mm	F mm	G mm	T mm	B mm	
SMJ10GUU	10	13	20	40	35	26	21	8	28	
SMJ12GUU	12	15	21	42	36	28	24	8	30,5	
SMJ13GUU	13	15	22	44	39	30	24,5	8	33	
SMJ16GUU	16	19	25	50	44	38,5	32,5	9	36	
SMJ20GUU	20	21	27	54	50	41	35	11	40	
SMJ25GUU	25	26	38	76	67	51,5	42	12	54	
SMJ30GUU	30	30	39	78	72	59,5	49	15	58	
SMJ35GUU	35	34	45	90	80	68	54	18	70	
SMJ40GUU	40	40	51	102	90	78	62	20	80	
SMJ50GUU	50	52	61	122	110	102	80	25	100	
SMJ60GUU	60	58	66	132	122	114	94	30	108	



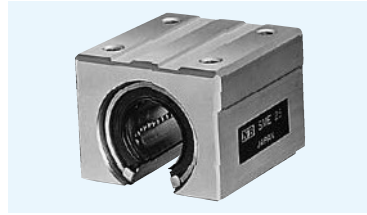
mounting dimensions			adjustment screw size S ₂	basic load rating		* mass g	shaft diameter mm	
C mm	K mm	S ₁		dynamic C N	static C ₀ N			
21	6	M5	12	M4	372	549	92	10
26	5,75	M5	12	M4	510	784	102	12
26	5,5	M5	12	M4	510	784	120	13
34	7	M5	12	M4	774	1,180	200	16
40	7	M6	12	M5	882	1,370	255	20
50	11	M8	18	M6	980	1,570	600	25
58	10	M8	18	M6	1,570	2,740	735	30
60	10	M8	18	M6	1,670	3,140	1,100	35
60	11	M10	25	M8	2,160	4,020	1,590	40
80	11	M10	25	M8	3,820	7,940	3,340	50
90	12	M12	25	M10	4,700	10,000	4,270	60

* Mass of resin retainer type

1N=0.102kgf

SME TYPE

— Open Block Type —



part number structure

example **SMSE 25 G UU**

specification
SME: standard
SMSE: anti-corrosion

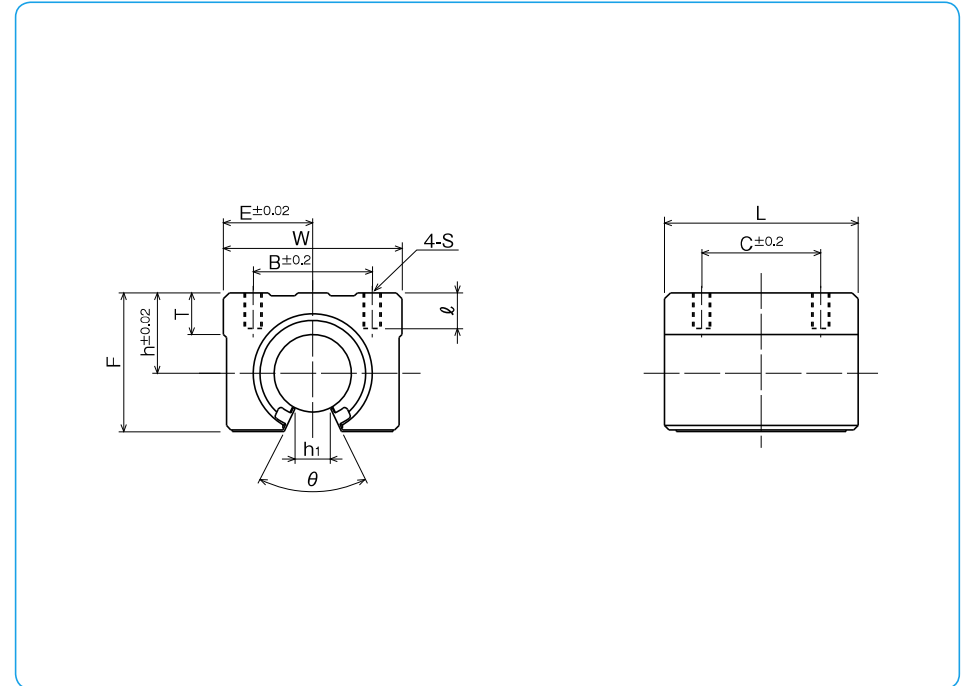
inner contact diameter

seal
blank: without seal
UU: seals on both sides

retainer material
blank: standard/steel*
 anti-corrosion/stainless steel*
G: resin

*Size 10 is provided with resin retainer type only.

part number	inner contact diameter mm	major dimensions							
		h mm	E mm	W mm	outer dimensions		T mm	h ₁ mm	θ
SME10GUU	10	15	18	36	32	24	7	6	80°
SME13GUU	13	17	20	40	39	28	8	8.5	80°
SME16GUU	16	20	22.5	45	45	33	9	10	80°
SME20GUU	20	23	24	48	50	39	11	10	60°
SME25GUU	25	27	30	60	65	47	14	11.5	50°
SME30GUU	30	33	35	70	70	56	15	14	50°
SME35GUU	35	37	40	80	80	63	18	16	50°
SME40GUU	40	42	45	90	90	72	20	19	50°
SME50GUU	50	53	60	120	110	92	25	23	50°



B mm	mounting dimensions			basic load rating		* mass g	shaft diameter mm
	C mm	S	ℓ mm	dynamic C N	static Co N		
25	20	M5	10	372	549	65	10
28	26	M5	10	510	784	100	13
32	30	M5	12	774	1,180	150	16
35	35	M6	12	882	1,370	200	20
40	40	M6	12	980	1,570	450	25
50	50	M8	18	1,570	2,740	630	30
55	55	M8	18	1,670	3,140	925	35
65	65	M10	20	2,160	4,020	1,330	40
94	80	M10	20	3,820	7,940	3,000	50

* Mass of resin retainer type

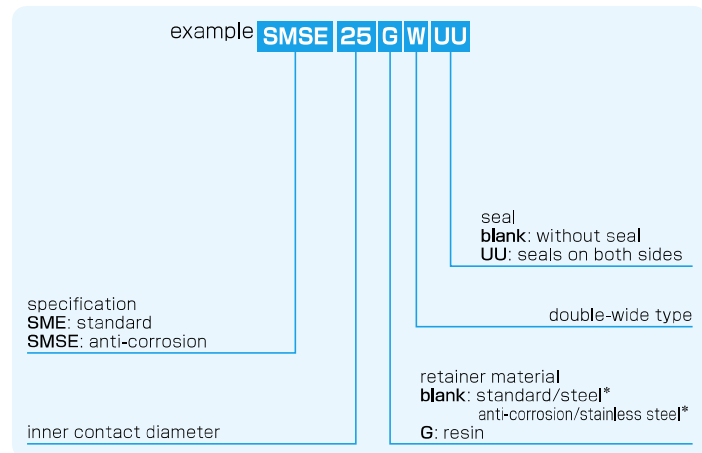
1N≒0.102kgf

SME-W TYPE

— Double-wide Open Block Type —

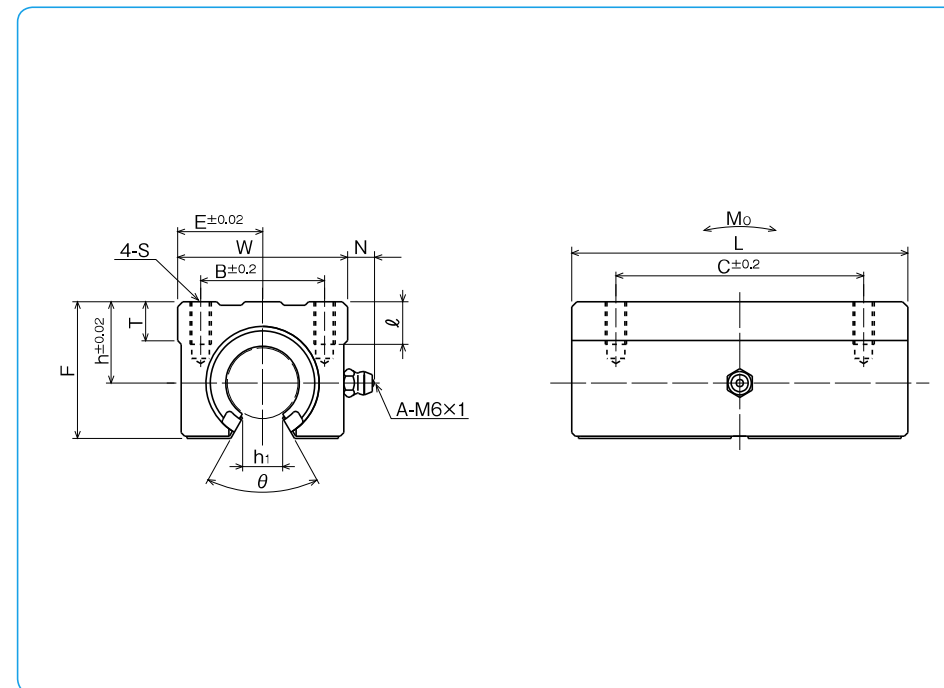


part number structure



*Size 10 is provided with resin retainer type only.

part number	inner contact diameter mm	outer dimensions							major dimensions	
		h mm	E mm	W mm	L mm	F mm	T mm	N mm	h ₁ mm	θ
SME10GWUU	10	15	18	36	65	24	7	7.5	6	80°
SME13GWUU	13	17	20	40	75	28	8	7.5	8.5	80°
SME16GWUU	16	20	22.5	45	85	33	9	7.5	10	80°
SME20GWUU	20	23	24	48	95	39	11	7.5	10	60°
SME25GWUU	25	27	30	60	130	47	14	7.5	11.5	50°
SME30GWUU	30	33	35	70	140	56	15	7.5	14	50°



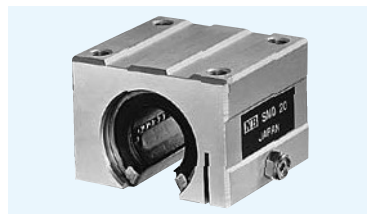
B mm	mounting dimensions			basic load rating		allowable static moment Mo N · m	※ mass g	shaft diameter mm
	C mm	S	ℓ mm	dynamic C N	static Co N			
25	40	M5	10	588	1,100	4.63	140	10
28	50	M5	10	813	1,570	7.42	200	13
32	60	M5	12	1,230	2,350	12.6	300	16
35	70	M6	12	1,400	2,740	14.5	400	20
40	90	M6	12	1,560	3,140	24.7	900	25
50	100	M8	18	2,490	5,490	47.2	1,260	30

* Mass of resin retainer type

1N ≒ 0.102kgf 1N · m ≒ 0.102kgf · m

SMD TYPE

— Open Block with Clearance Adjustable Type —



part number structure

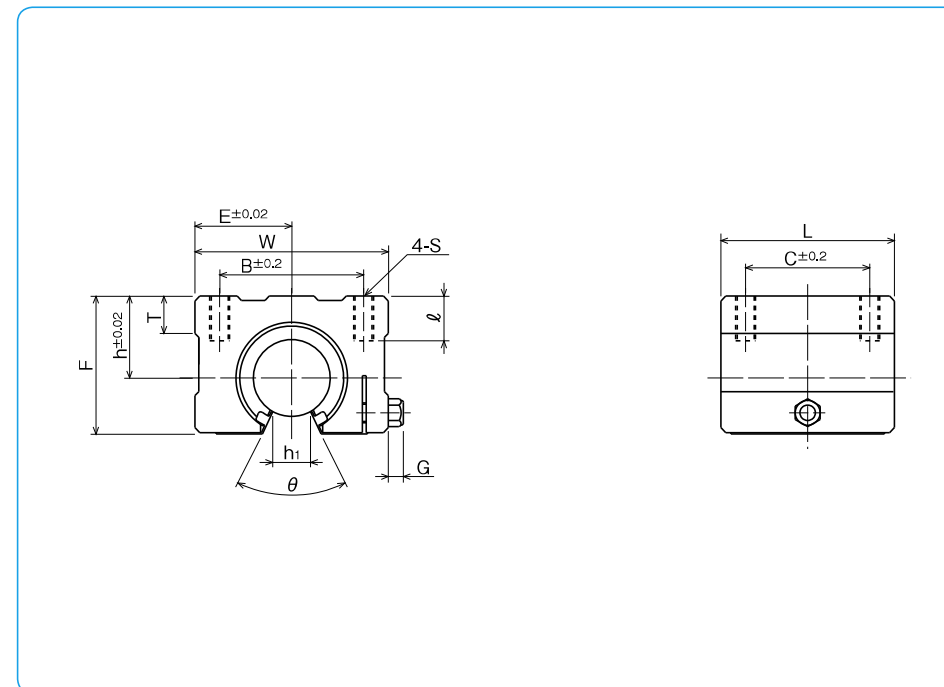
example **SMSD 25 G UU**

specification
SMD: standard
SMSD: anti-corrosion

seal
blank: without seal
UU: seals on both sides

retainer material
blank: standard/steel
 anti-corrosion/stainless steel
G: resin

inner contact diameter



part number	inner contact diameter mm	h mm	outer dimensions				major dimensions				
			E mm	W mm	L mm	F mm	T mm	G mm	h ₁ mm	θ	
SMD16GUU	16	20	25	50	45	33	9	6	10	80°	
SMD20GUU	20	23	27	54	50	39	11	7	10	60°	
SMD25GUU	25	27	38	76	65	47	14	7	11.5	50°	
SMD30GUU	30	33	39	78	70	56	15	7	14	50°	

mounting dimensions				basic load rating		* mass g	shaft diameter mm
B mm	C mm	S	ℓ mm	dynamic C N	static Co N		
36	30	M5	12	774	1,180	170	16
40	35	M6	12	882	1,370	240	20
54	40	M6	12	980	1,570	580	25
58	50	M8	18	1,570	2,740	720	30

* Mass of resin retainer type

1N≒0.102kgf

RB TYPE

— Resin Block Type —

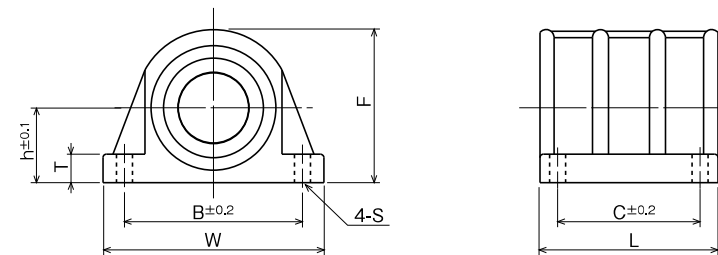


part number structure

example **RB 20**

RB type

inner contact diameter



part number	inner contact diameter		major dimensions			
	mm	tolerance μm	h mm	outer dimensions		
				W mm	L mm	F mm
RB10	10	0 -9	13	45	35	26.5
RB12	12		15	50	36	30
RB13	13		15	50	39	31
RB16	16		19	56	44	38.5
RB20	20	0/-10	21	62	50	43

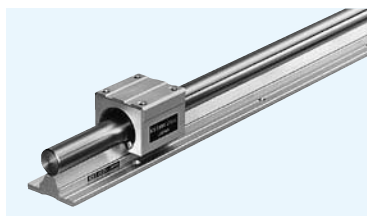
RB has seals as standard.

T mm	mounting dimensions			basic load rating		mass g	shaft diameter mm
	B mm	C mm	S mm	dynamic C N	static Co N		
6	35	21	4.5	372	549	43	10
6.5	40	26	4.5	510	784	50	12
6.5	40	26	4.5	510	784	63	13
7	46	34	4.5	774	1,180	99	16
8	50	40	5.5	882	1,370	127	20

1N≒0.102kgf

CE TYPE

– Non-Clearance Adjustable Type –



part number structure

CES 25 - 2 - 500

specification
CE: standard
CES: anti-corrosion

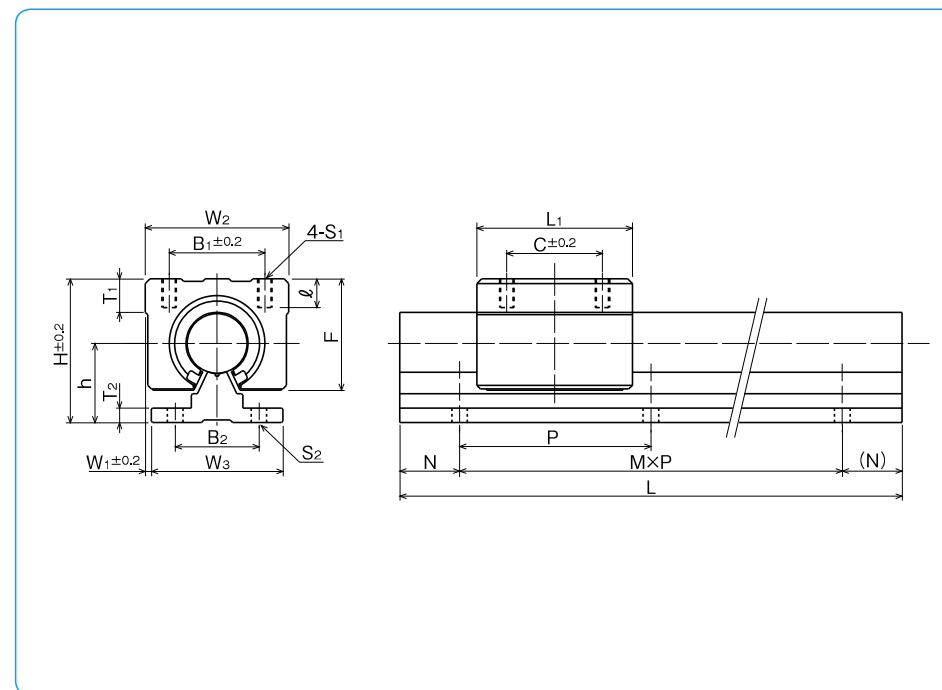
total length

shaft diameter

number of blocks
attached to one shaft

※Bush inside is a resin retainer type with seals.

part number		shaft diameter mm	assembly dimension			block dimension										major dimensions				
standard	anti-corrosion		H	h	W ₁	W ₂	L ₁	B ₁	C	T ₁	ℓ	S ₁	F	W ₃	B ₂	T ₂	P	S ₂		
CE16	CES16	16	45	25	2.5	45	45	32	30	9	12	M5	33	40	30	5	150	5.5		
CE20	CES20	20	50	27	1.5	48	50	35	35	11	12	M6	39	45	30	5	150	5.5		
CE25	CES25	25	60	33	2.5	60	65	40	40	14	12	M6	47	55	35	6	200	6.5		
CE30	CES30	30	70	37	5	70	70	50	50	15	18	M8	56	60	40	7	200	6.5		

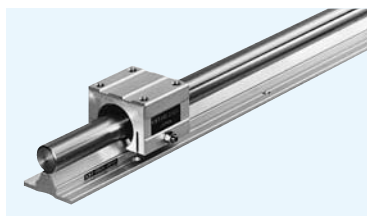


rail dimensions L (M,N) mm				basic load rating		mass		size
				dynamic C N	static Co N	block g	rail kg/m	
300 (1,75)	500 (3,25)	800 (5,25)	1,000 (6,50)	774	1,180	150	2.58	16
1,500 (9,75)	1,800 (11,75)	2,000 (13,25)		882	1,370	200	3.49	20
300 (1,50)	500 (2,50)	800 (3,100)	1,000 (4,100)	980	1,570	450	5.31	25
1,500 (7,50)	1,800 (8,100)	2,000 (9,100)		1,570	2,740	630	7.39	30

1N=0,102kgf

CD TYPE

– Clearance Adjustable Type –



part number structure

CDS 25 - 2 - 500

specification
CD: standard
CDS: anti-corrosion

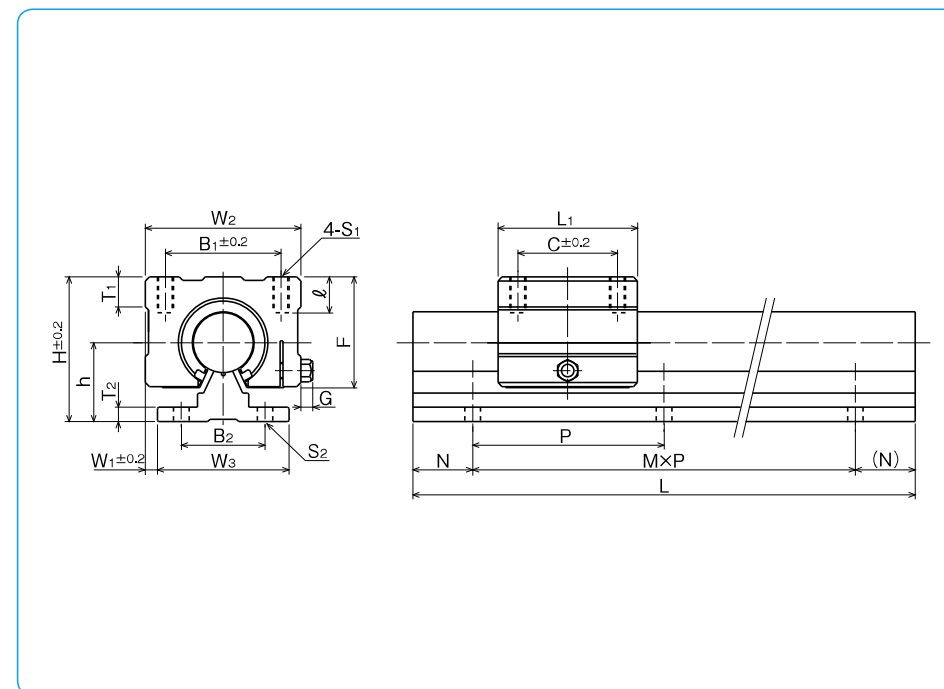
shaft diameter

number of blocks
attached to one shaft

total length

※Bush inside is a resin retainer type with seals.

part number		shaft diameter mm	assembly dimensions														major dimensions			
standard	anti-corrosion		H	h	W ₁	W ₂	L ₁	B ₁	C	T ₁	ℓ	S ₁	G	F	W ₃	B ₂	T ₂	P	S ₂	
CD16	CDS16	16	45	25	5	50	45	36	30	9	12	M5	6	33	40	30	5	150	5.5	
CD20	CDS20	20	50	27	4.5	54	50	40	35	11	12	M6	7	39	45	30	5	150	5.5	
CD25	CDS25	25	60	33	10.5	76	65	54	40	14	12	M6	7	47	55	35	6	200	6.5	
CD30	CDS30	30	70	37	9	78	70	58	50	15	18	M8	7	56	60	40	7	200	6.5	



rail dimensions L (M,N) mm				basic load rating		mass		size
dynamic C N		static Co N		block g	rail kg/m			
300 (1,75)	500 (3,25)	800 (5,25)	1,000 (6,50)	774	1,180	170	2.58	16
1,500 (9,75)	1,800 (11,75)	2,000 (13,25)		882	1,370	240	3.49	20
300 (1,50)	500 (2,50)	800 (3,100)	1,000 (4,100)	980	1,570	580	5.31	25
1,500 (7,50)	1,800 (8,100)	2,000 (9,100)		1,570	2,740	720	7.39	30

1N=0,102kgf

SWA TYPE (Inch Standard)

– Block Type –



part number structure

example **SWA20GRUU**

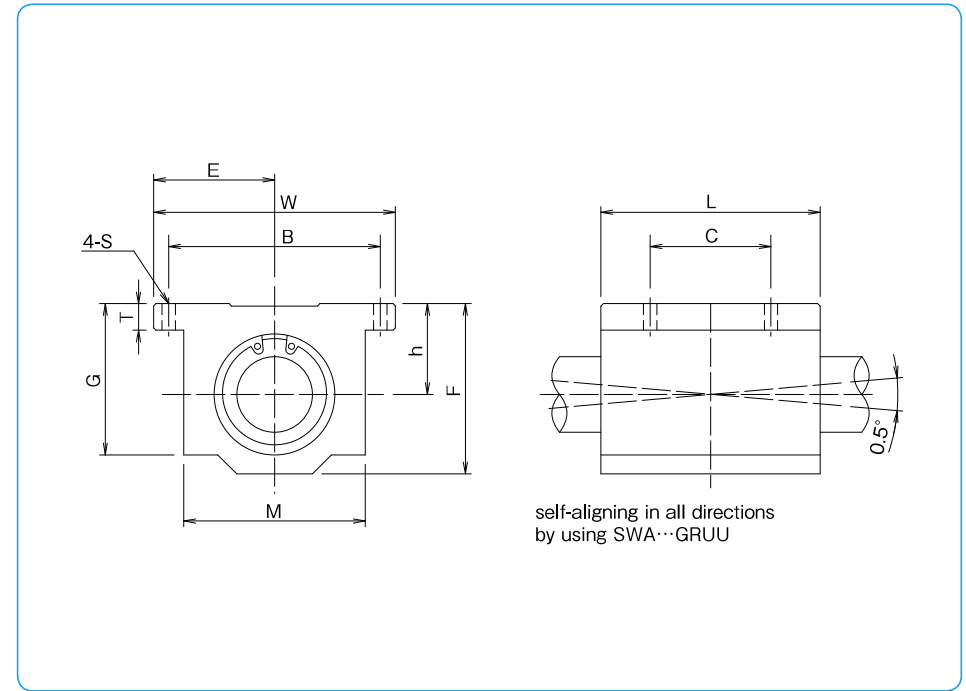
specification
SWA: standard
SWSA: anti-corrosion

size

retainer material
blank: standard/steel
 anti-corrosion/stainless steel
G: resin

seal
blank: without seal
UU: seals on both sides

self-aligning
 (SWA-resin retainer only)



part number	inner contact diameter tolerance		major dimensions				
			outer dimensions				
			h	E	W	L	F
inch/mm	inch/ μ m	$\pm.001/\pm 0.02$ inch/mm	$\pm.001/\pm 0.02$ inch/mm	inch/mm	inch/mm	inch/mm	inch/mm
SWA 4GUU	.2500		.4370	.8125	1.625	1.188	.813
	6.350		11.100	20.638	41.28	30.16	20.64
SWA 6GUU	.3750	0	.5000	.8750	1.750	1.313	.938
	9.525	−.00040	12.700	22.225	44.45	33.34	23.82
SWA 8GUU	.5000	0	.6870	1.0000	2.000	1.688	1.250
	12.700	−9	17.450	25.400	50.80	42.86	31.75
SWA 10GUU	.6250		.8750	1.2500	2.500	1.938	1.625
	15.875		22.225	31.750	63.50	49.21	41.28
SWA 12GUU	.7500	0	.9370	1.3750	2.750	2.063	1.750
	19.050	−.00040	23.800	34.925	69.85	52.39	44.45
SWA 16GUU	1.0000	0	1.1870	1.6250	3.250	2.813	2.188
	25.400	−10	30.150	41.275	82.55	71.44	55.56
SWA 20GUU	1.2500		1.5000	2.0000	4.000	3.625	2.813
	31.750	0	38.100	50.800	101.60	92.08	71.44
SWA 24GUU	1.5000	−.00050	1.7500	2.3750	4.750	4.000	3.250
	38.100	0	44.450	60.325	120.65	101.60	82.55
SWA 32GUU	2.0000	−12	2.1250	3.0000	6.000	5.000	4.063
	50.800		53.975	76.200	152.40	127.00	103.19

T	G	M	mounting dimensions			dynamic C	static Co	mass
			B	C	S			
			$\pm.01/\pm 0.2$ inch/mm	$\pm.01/\pm 0.2$ inch/mm	inch/mm			
inch/mm	inch/mm	inch/mm	inch/mm	inch/mm	N	N	g	
.188	.750	1.000	1.312	.750	.156	206	265	45
4.76	19.05	25.40	33.33	19.05	4.0			
.188	.875	1.125	1.437	.875	.156	225	314	62
4.76	22.23	28.58	36.50	22.23	4.0			
.250	1.125	1.375	1.688	1.000	.156	510	784	130
6.35	28.58	34.93	42.88	25.40	4.0			
.281	1.437	1.750	2.125	1.125	.188	774	1,180	240
7.14	36.50	44.45	53.98	28.58	4.8			
.313	1.563	1.875	2.375	1.250	.188	862	1,370	290
7.94	39.69	47.63	60.33	31.75	4.8			
.375	1.938	2.375	2.875	1.750	.219	980	1,570	615
9.53	49.21	60.33	73.03	44.45	5.6			
.438	2.500	3.000	3.500	2.000	.219	1,570	2,740	1,300
11.11	63.50	76.20	88.90	50.80	5.6			
.500	2.875	3.500	4.125	2.500	.281	2,160	4,020	1,900
12.70	73.03	88.90	104.78	63.50	7.2			
.625	3.625	4.500	5.250	3.250	.406	3,820	7,940	3,600
15.88	92.08	114.30	133.35	82.55	10.5			

SI UNIT 1N \approx 0.225lbf
 1kg \approx 2.205lbs

SWJ TYPE (Inch Standard)

– Clearance Adjustable Block Type –



part number structure

example **SWJ20GRUU**

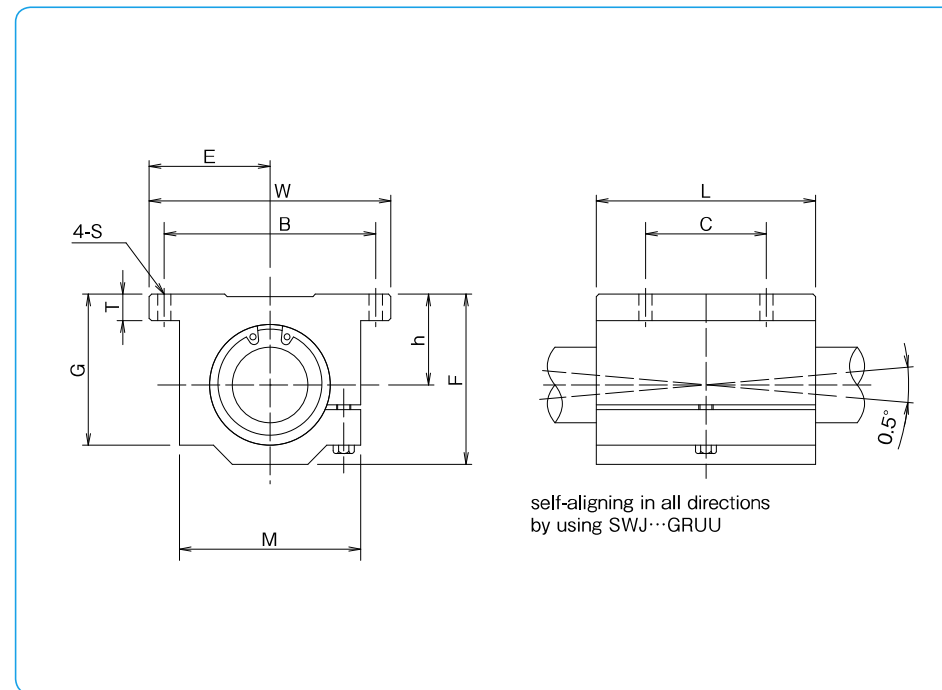
specification
SWJ: standard
SWSJ: anti-corrosion

size

retainer material
blank: standard/steel
 anti-corrosion/stainless steel
G: resin

seal
blank: without seal
UU: seals on both sides

self-aligning
 (SWA-resin retainer only)



self-aligning in all directions
 by using SWJ...GRUU

part number	major dimensions					
	inner contact diameter	outer dimensions				
		h	E	W	L	F
inch/mm	±.001/±0.02 inch/mm	±.001/±0.02 inch/mm	inch/mm	inch/mm	inch/mm	
SWJ 4GUU	.2500	.4370	.8125	1.625	1.188	.813
	6.350	11.100	20.638	41.28	30.16	20.64
SWJ 6GUU	.3750	.5000	.8750	1.750	1.313	.938
	9.525	12.700	22.225	44.45	33.34	23.82
SWJ 8GUU	.5000	.6870	1.0000	2.000	1.688	1.250
	12.700	17.450	25.400	50.80	42.86	31.75
SWJ 10GUU	.6250	.8750	1.2500	2.500	1.938	1.625
	15.875	22.225	31.750	63.50	49.21	41.28
SWJ 12GUU	.7500	.9370	1.3750	2.750	2.063	1.750
	19.050	23.800	34.925	69.85	52.39	44.45
SWJ 16GUU	1.0000	1.1870	1.6250	3.250	2.813	2.188
	25.400	30.150	41.275	82.55	71.44	55.56
SWJ 20GUU	1.2500	1.5000	2.0000	4.000	3.625	2.813
	31.750	38.100	50.800	101.60	92.08	71.44
SWJ 24GUU	1.5000	1.7500	2.3750	4.750	4.000	3.250
	38.100	44.450	60.325	120.65	101.60	82.55
SWJ 32GUU	2.0000	2.1250	3.0000	6.000	5.000	4.063
	50.800	53.975	76.200	152.40	127.00	103.19

T	G	M	mounting dimensions			dynamic C	static Co	mass
			B	C	S			
			±.01/±0.2 inch/mm	±.01/±0.2 inch/mm	inch/mm			
.188	.750	1.000	1.312	.750	.156	206	265	45
4.76	19.05	25.40	33.33	19.05	4.0	225	315	62
.188	.875	1.125	1.437	.875	.156	510	784	130
4.76	22.23	28.58	36.50	22.23	4.0	774	1,180	240
.250	1.125	1.375	1.688	1.000	.156	862	1,370	290
6.35	28.58	34.93	42.88	25.40	4.0	980	1,570	615
.281	1.437	1.750	2.125	1.125	.188	1,570	2,740	1,300
7.14	36.50	44.45	53.98	28.58	4.8	2,160	4,020	1,900
.313	1.563	1.875	2.375	1.250	.188	3,820	7,940	3,600
7.94	39.69	47.63	60.33	31.75	4.8			
.375	1.938	2.375	2.875	1.750	.219			
9.53	49.21	60.33	73.03	44.45	5.6			
.438	2.500	3.000	3.500	2.000	.219			
11.11	63.50	76.20	88.90	50.80	5.6			
.500	2.875	3.500	4.125	2.500	.281			
12.70	73.03	88.90	104.78	50.80	7.2			
.625	3.625	4.500	5.250	3.250	.406			
15.88	92.08	114.30	133.35	82.55	10.5			

SI UNIT 1N≒0.225lbf
 1kg≒2.205lbs

SWD TYPE (Inch Standard)

— Open Block Type —



part number structure

example **SWD20GRUU**

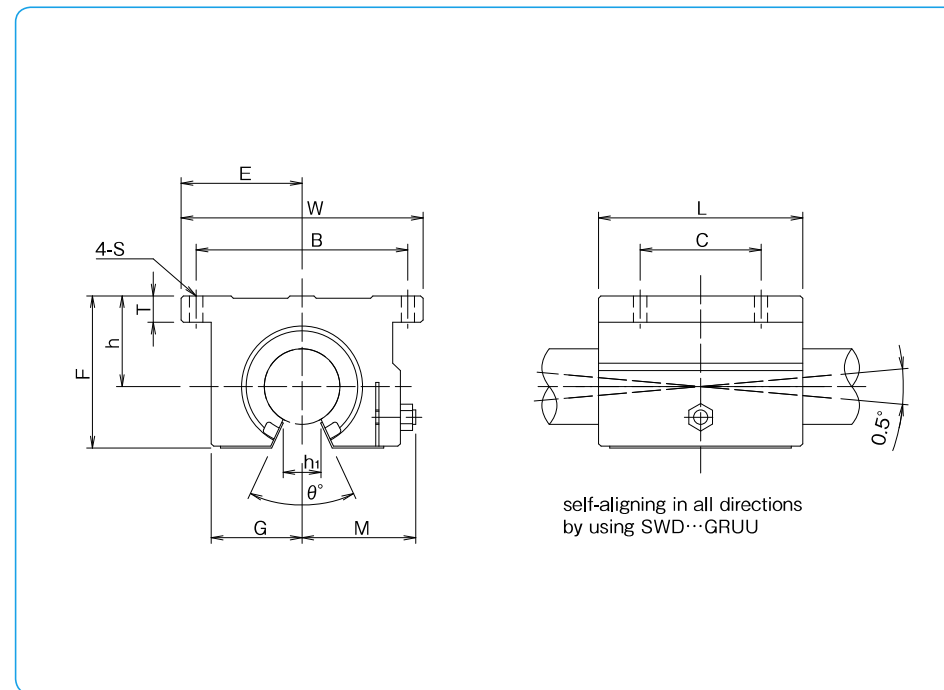
specification
SWD: standard
SWSD: anti-corrosion

size

retainer material
blank: standard/steel
 anti-corrosion/stainless steel
G: resin

seal
blank: without seal
UU: seals on both sides

self-aligning
 (SWA-resin retainer only)



part number	inner contact diameter inch/mm	major dimensions						
		h ±.001/±0.02 inch/mm	E ±.001/±0.02 inch/mm	W inch/mm	L inch/mm	F inch/mm	outer dimensions T G inch/mm inch/mm	
SWD 8GUU	.5000	.6870	1.0000	2.000	1.500	1.100	.250	.688
	12.700	17.450	25.400	50.80	38.10	27.94	6.35	17.5
SWD 10GUU	.6250	.8750	1.2500	2.500	1.750	1.375	.281	.875
	15.875	22.225	31.750	63.50	44.45	34.93	7.14	22.23
SWD 12GUU	.7500	.9370	1.3750	2.750	1.875	1.535	.315	.937
	19.050	23.800	34.950	69.85	47.63	39.00	8.00	23.80
SWD 16GUU	1.0000	1.1870	1.6250	3.250	2.625	1.975	.375	1.188
	25.400	30.150	41.300	82.55	66.68	50.17	9.53	30.18
SWD 20GUU	1.2500	1.5000	2.0000	4.000	3.375	2.485	.437	1.500
	31.750	38.100	50.800	101.60	85.73	63.12	11.10	38.10
SWD 24GUU	1.5000	1.7500	2.3750	4.750	3.750	2.910	.500	1.750
	38.100	44.450	60.325	120.65	95.25	73.90	12.70	44.45
SWD 32GUU	2.0000	2.1250	3.0000	6.000	4.750	3.660	.625	2.250
	50.800	53.975	76.200	152.4	120.65	92.90	15.88	57.15

M	h ₁	θ	mounting dimensions			dynamic C N	static C ₀ N	mass g
			B ±.01/±0.2 inch/mm	C ±.01/±0.2 inch/mm	S inch/mm			
.98	.3425	80°	1.688	1.000	.156	510	784	98
24.89	8.70	80°	42.88	25.40	4.0	774	1,180	185
1.15	.375	80°	2.125	1.125	.188	862	1,370	235
29.21	9.53	80°	53.98	28.58	4.8	980	1,570	530
1.23	.4375	60°	2.375	1.250	.188	1,570	2,740	1,080
31.24	11.11	60°	60.33	31.75	4.8	2,160	4,020	1,620
1.48	.5625	50°	2.875	1.750	.218	3,820	7,940	3,100
37.59	14.29	50°	73.03	44.45	5.6			
1.88	.625	50°	3.500	2.000	.218			
47.75	15.88	50°	88.90	50.80	5.6			
2.12	.750	50°	4.125	2.500	.281			
53.85	19.05	50°	104.78	63.50	7.4			
2.70	1.00	50°	5.250	3.250	.406			
68.58	25.40	50°	133.35	82.55	10.5			

SI UNIT 1N≐0.225lbf
 1kg≐2.205lbs

RBW TYPE

(Inch Standard / Anti-Corrosion Type)

— Resin Block Type —

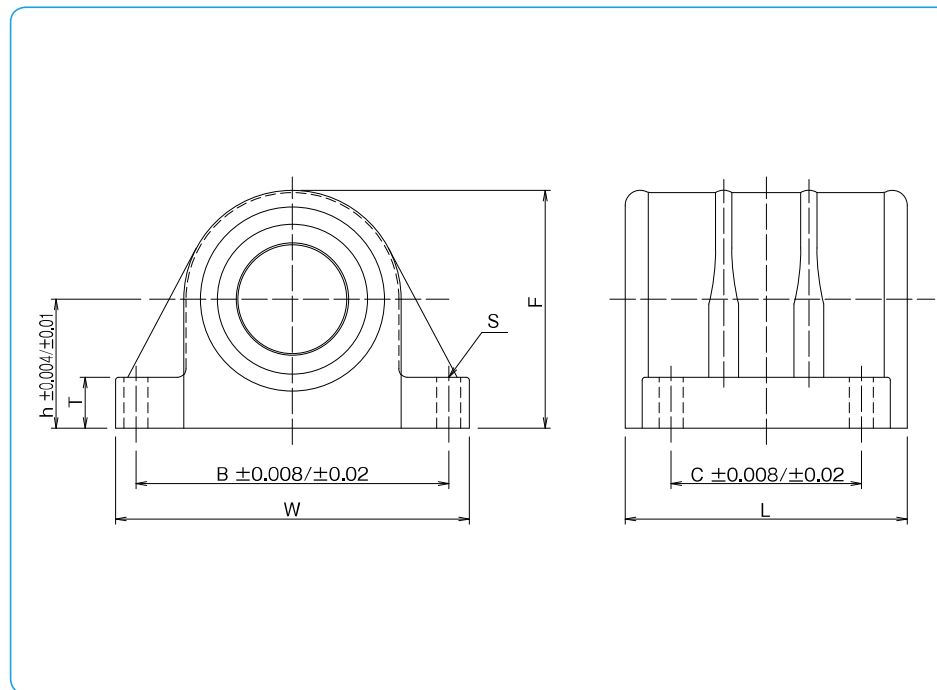


part number structure

example **RBW 16**

RBW type

size



part number	inner contact diameter		major dimensions			
	inch/mm	tolerance inch/ μ m	h inch/mm	outer dimensions W L inch/mm inch/mm		F inch/mm
RBW 8	0.5000	0	0.6870	2.000	1.5937	1.2500
	12.700	-0.00040	17.450	50.80	40.481	31.750
RBW 10	0.6250	0	0.8750	2.500	1.8437	1.6250
	15.875	-9	22.225	63.50	46.831	41.275
RBW 12	0.7500	0	0.9370	2.750	1.9687	1.7500
	19.050	-0.00040	23.800	69.85	50.006	44.450
RBW 16	1.0000	0	1.1870	3.250	2.5937	2.1870
	25.400	-10	30.150	82.55	65.881	55.550

※RBW type has side-seals as standard.

mounting dimensions				basic load rating		mass g
T inch/mm	B inch/mm	C inch/mm	S inch/mm	dynamic C N	static Co N	
0.3437	1.688	1.000	0.157	510	784	51
8.731	42.875	25.400	4.0			
0.3750	2.125	1.125	0.189	774	1180	99
9.525	53.975	28.575	4.8			
0.4063	2.375	1.250	0.189	862	1370	129
10.319	60.325	31.750	4.8			
0.4687	2.875	1.750	0.220	980	1570	242
11.906	73.025	44.450	5.6			

SI UNIT 1N \approx 0.225lbf
1kg \approx 2.205lbs